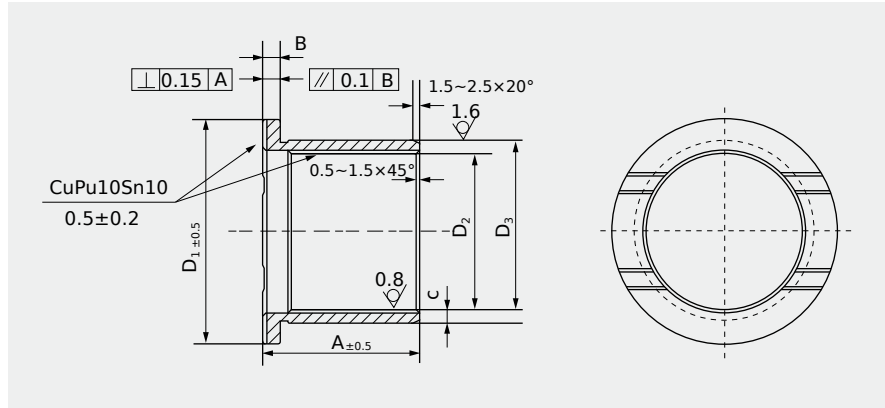


## AM-800F Welding Flange Type Bushing



Unit:mm

| D <sub>1</sub> | B   | D <sub>3</sub> | D <sub>2</sub> | A  | C   |
|----------------|-----|----------------|----------------|----|-----|
| 42             | 3.5 | 37             | 30             | 30 | 3.5 |
| 43             | 2   | 34             | 30             | 28 | 2   |
| 44             | 3.5 | 39             | 32             | 35 | 3.5 |
| 47             | 3.5 | 39             | 32             | 50 | 3.5 |
| 48             | 2   | 39             | 35             | 37 | 2   |
| 52             | 3   | 41             | 35             | 35 | 3   |
| 55             | 3.5 | 42             | 35             | 35 | 3.5 |
| 55             | 3.5 | 45             | 38             | 35 | 3.5 |
| 55             | 3.5 | 45             | 38             | 40 | 3.5 |
| 60             | 3   | 41             | 35             | 42 | 3   |
| 60             | 3   | 46             | 40             | 62 | 3   |
| 63             | 3.5 | 47             | 40             | 40 | 3.5 |
| 65             | 3.5 | 52             | 45             | 40 | 3.5 |
| 68             | 3.5 | 54             | 47             | 35 | 3.5 |
| 70             | 3.5 | 54             | 47             | 40 | 3.5 |
| 70             | 3.5 | 57             | 50             | 48 | 3.5 |
| 72             | 3.5 | 57             | 50             | 45 | 3.5 |
| 72             | 3.5 | 57             | 50             | 50 | 3.5 |
| 75             | 3.5 | 57             | 50             | 50 | 3.5 |
| 77             | 3   | 60             | 54             | 55 | 3   |
| 83             | 3.5 | 66             | 59             | 53 | 3.5 |
| 85             | 3.5 | 65             | 58             | 60 | 3.5 |
| 87             | 3.5 | 67             | 60             | 53 | 3.5 |
| 87             | 3.5 | 67             | 60             | 60 | 3.5 |

| D <sub>1</sub> | B     | D <sub>3</sub> | D <sub>2</sub> | A    | C   |
|----------------|-------|----------------|----------------|------|-----|
| 87             | 3.5   | 67             | 60             | 65   | 3.5 |
| 87             | 4     | 68             | 60             | 60   | 4   |
| 94             | 3.5   | 72             | 65             | 60   | 3.5 |
| 87             | 3.5   | 72             | 65             | 65   | 3.5 |
| 87.5           | 1.95  | 69.12          | 65.22          | 64.5 | 2   |
| 88             | 3.5   | 67             | 60             | 60   | 3.5 |
| 88             | 3.5   | 72             | 65             | 65   | 3.5 |
| 92             | 3.5   | 77             | 70             | 67   | 3.5 |
| 93             | 3.5   | 75             | 68             | 60   | 3.5 |
| 94             | 3.5   | 77             | 70             | 70   | 3.5 |
| 95             | 3.5   | 77             | 70             | 65   | 3.5 |
| 95             | 4     | 78             | 70             | 70   | 4   |
| 97             | 3.48  | 77.14          | 70.18          | 62   | 3.5 |
| 97             | 3.5   | 82             | 75             | 74   | 3.5 |
| 100            | 5     | 85             | 75             | 70   | 5   |
| 103            | 3.525 | 70.8           | 63.75          | 73   | 3.5 |
| 105            | 3.5   | 82             | 75             | 75   | 3.5 |
| 105            | 3.5   | 87             | 80             | 70   | 3.5 |
| 107            | 4     | 83             | 75             | 74   | 4   |
| 115            | 5     | 100            | 90             | 75   | 5   |
| 128            | 3.8   | 92.6           | 85             | 103  | 4   |
| 108            | 3.5   | 72             | 65             | 75   | 3.5 |
| 108            | 3.5   | 77             | 70             | 98   | 3.5 |
| 108            | 5     | 80             | 70             | 90   | 5   |

OD tolerance: +0.12 ~ +0.16, Mating ID: +0.03 ~ +0.05; ID tolerance: +0.20 ~ +0.25, Mating shaft: -0.14 ~ -0.16.

The above mentioned sizes are only for reference, ACE can produce the parts according to the customers drawings.